



Northeast Energy Efficiency Partnerships

LED STREET LIGHTING: OPPORTUNITIES AND EMERGING STRATEGIES

Northeast Energy Efficiency Partnerships (NEEP)

Monday, September 21, 2015

ACEEE Energy Efficiency as a Resource Conference

Little Rock, Arkansas

NORTHEAST ENERGY EFFICIENCY PARTNERSHIPS

“Accelerating Energy Efficiency”

MISSION

Accelerate the efficient use of energy in the Northeast and Mid-Atlantic Regions

APPROACH

Overcome barriers to efficiency through
Collaboration, Education & Advocacy

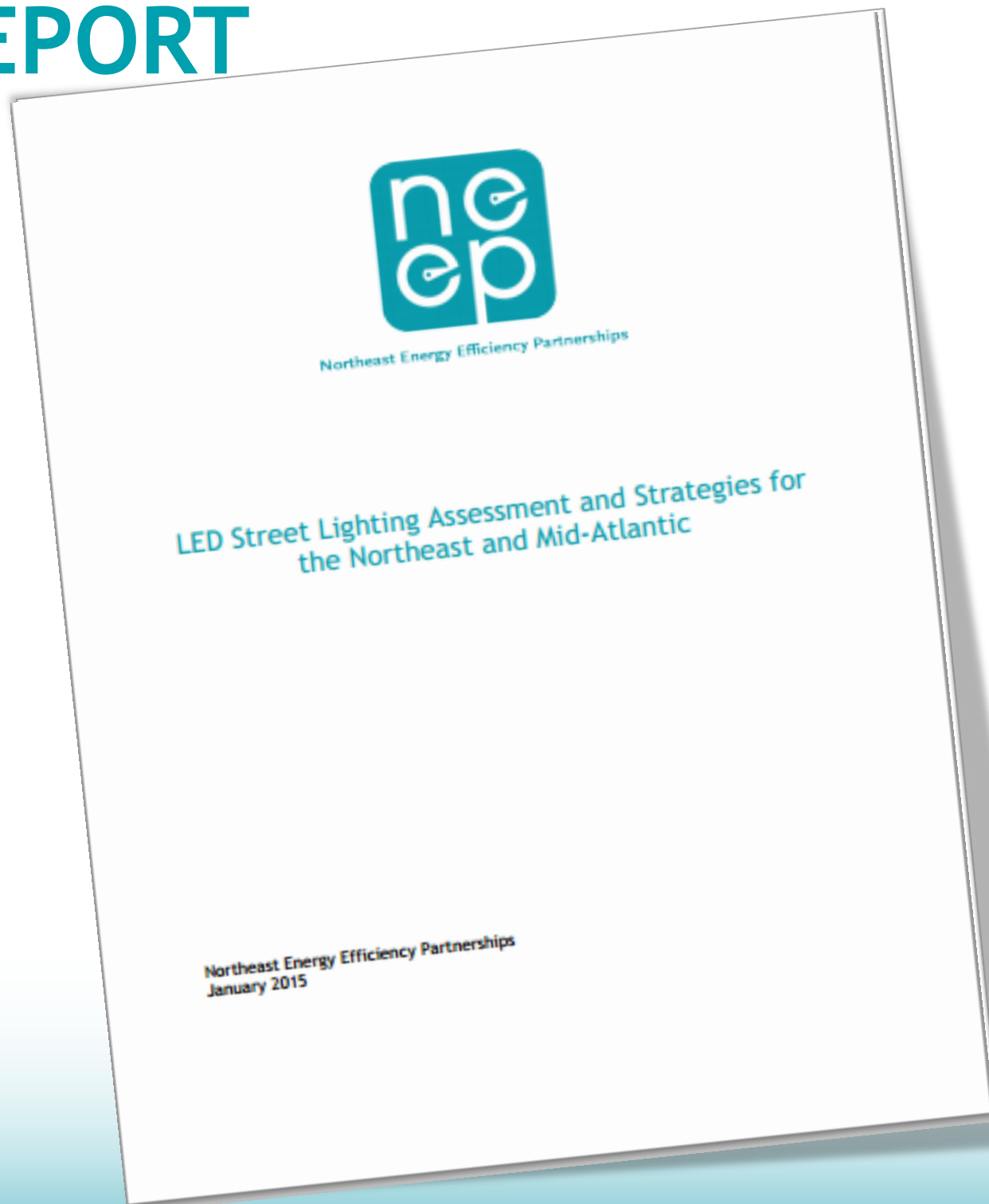
VISION

Transform the way we think about
and use energy in the world around us.

One of six Regional Energy Efficiency Organizations (REEOs) designated by U.S. Dept. of Energy to work collaboratively with them in linking regions to DOE guidance, products



NEEP REPORT





ABOUT NEEP

INITIATIVES

EVENTS

NEWS

NETWORK

RESOURCES



Northeast Energy Efficiency Partnerships

Developing strategies and
guidance for the region

Learn More >>



AGENDA



1. Opportunities

1. The Basics
2. Cost Savings
3. Additional Benefits
4. Advanced Controls

2. Conversion Considerations

1. Technical
2. Regulatory
3. Financial

3. Case studies

1. Pittsburgh, PA
2. Baltimore, MD

4. Resources



OPPORTUNITIES: THE BASICS



FIXTURE HOUSING TYPES

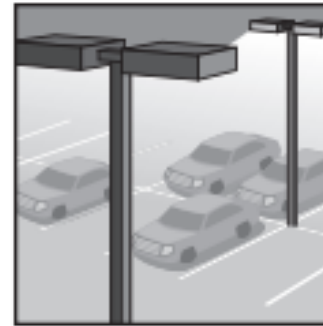
Photo Credits: Efficiency Vermont, NYSERDA



Cobrahead



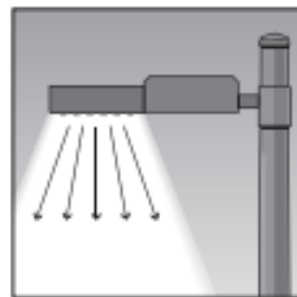
Flood Light



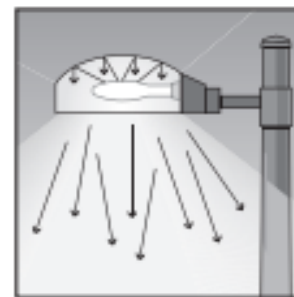
Shoebbox



Post-Top



LED Street Light



Traditional Street Light

Table 2-5. Retrofit/Replacement Projects: Current Expected LED Street Light Simple Paybacks^a

Fixture Type	Light Output					
	Low (<50W)		Medium (50W-100W)		High (>100W)	
	Min	Max	Min	Max	Min	Max
Decorative	14.2	20.2	14.1	21.3	12.5	18.6
Decorative kit	9.7	15.1	10.7	17.0	8.9	16.0
Cobrahead	3.6	5.6	4.0	7.7	3.9	7.7

^a Assumes no program administrator incentives. Does not account for cost of money.

OPPORTUNITIES: COST SAVINGS



Cost Savings

- Street Lighting accounts for 20-40% of a municipality's electric utility costs
- Energy Cost-Savings (reduces consumption by 50%+)
- Maintenance Cost-Savings (~\$50/lamp/year)



Table 4: SCL Example of LED Street Light Cost Reduction over 4-Year Period²⁴

LED Street Light Cost Reductions over 4-Year Period					
	2009	2010	2011	2012	2013
Seattle (Purchases of 2,000+ Units)	\$369	\$288	\$239	\$204	\$179
Los Angeles	\$432	\$298	\$285	\$245	\$141

OPPORTUNITIES: ADDITIONAL BENEFITS



Additional Benefits



- Reduced Light Pollution at Night
- Lighting Quality
- Great Perceived Security



- Extended Lifecycle
- Reduced Carbon Emissions
- Can Incorporate Advanced Controls
- Gateway to the “Smart City”

OPPORTUNITIES: ADVANCED CONTROLS

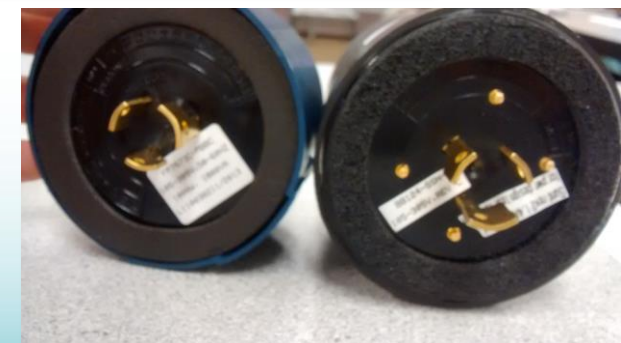
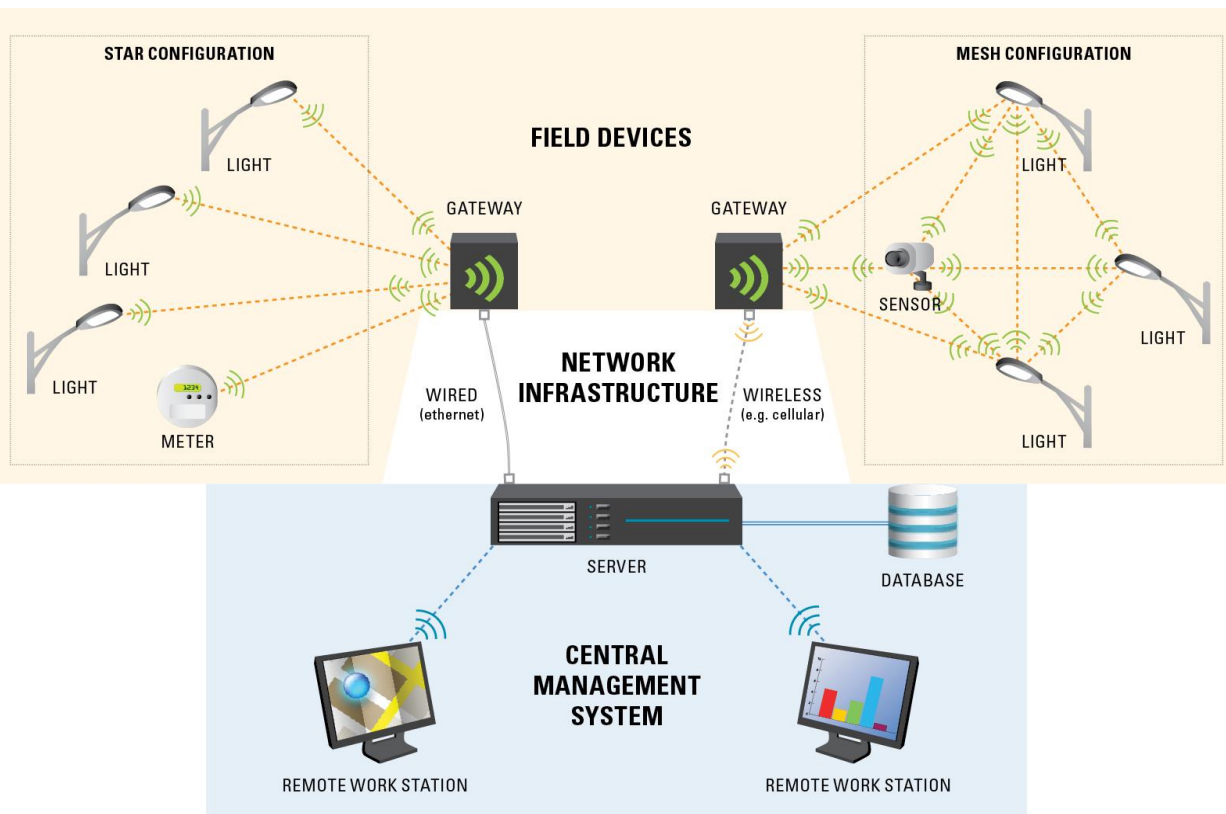


Traditional Controls

- Three-prong
- Photocell
- Unmetered
- Fail in the “on” position
- Do not offer dimming

Advanced Controls

- Seven-prong
- Contain a meter
- Allow for dimming
- Potentially act as wireless hotspots
- Can alert to failed lamps
- Emergency Alert
- CO₂, Traffic, Decibel sensors embedded



(Image Credit: California Lighting Technology Center, UC Davis)

CONVERSION CONSIDERATIONS: NAVIGATING BARRIERS



NAVIGATING BARRIERS: COMPANY-OWNED TARIFFS



Table A7: Central Maine Power HPS/LED Rate Comparison

Central Maine Power (Maine) ⁶⁸							
HPS Rate				LED Rate			
Lumen Rating	Watts (Nominal)	Input Watts	Annual Rate Per Light	Lumens Rating	Watts (Nominal)	Input Watts	Annual Rate Per Light
3,600	50W	65	\$131.88	4190	50	50	\$248.64
5,670	70W	95	\$130.68				
8,550	100W	130	\$140.04				
14,400	150W	195	\$166.32				
25,600	250W	300	\$228.96				
45,000	400W	465	\$290.76				



Distribution Charge Difference
\$118

Table A12: Until HPS/LED Rate Comparison

Unitil (Massachusetts) ⁹³			
HPS Rate		LED Rate	
Lumen Rating	Annual Rate Per Light	Lumen Rating	Annual Rate Per Light
3,300	\$117.48	3,850	\$101.64
9,500	\$139.80	6,100	\$120.48
20,000	\$208.20	10,680	\$150.96
50,000	\$295.92	20,000	\$243.24
140,000	\$607.08		



Energy Savings
\$0.08/kWh
4200 hrs
\$24/ lamp

APPENDIX A EXAMPLE: MASSACHUSETTS



Massachusetts Street Light Summary

Number of Street Lights:	496,000
Percent Region's Total Street Lights:	10 percent
Annual Street light Energy Usage:	305 GWh
Annual Potential Energy Savings:	152.5 GWh
Annual Potential Energy-Cost Savings:	\$13.7 Million
Annual Potential Maintenance Cost-Savings:	\$24.8 Million
LED Conversion Installed Costs:	\$139.4 Million
Annual Potential Lighting Controls Energy Savings:	13.7 GWh
Annual Potential Lighting Controls Cost Savings:	\$1.2 Million
Lighting Controls Installed Cost:	\$13.9 Million

Massachusetts Utilities by Percent Residential Customers

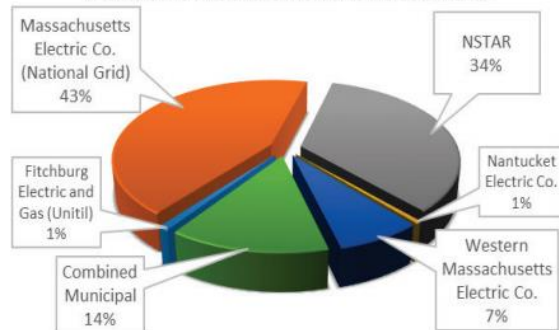


Table A12: Unitil HPS/LED Rate Comparison

Unitil (Massachusetts)⁹³

HPS Rate		LED Rate	
Lumen Rating	Annual Rate Per Light	Lumen Rating	Annual Rate Per Light
3,300	\$117.48	3,850	\$101.64
9,500	\$139.80	6,100	\$120.48
20,000	\$208.20	10,680	\$150.96
50,000	\$295.92	20,000	\$243.24
140,000	\$607.08		

Table A13: Notable Conversion Projects (Massachusetts)

Massachusetts LED Street Light Projects and Prospective Projects		
Municipality	Date	Details
Cape Light Compact	Present	Has Coordinated the Conversion of 15,000 Street lights in 20 municipalities including: Hyannis, Dennis, Harwich, Chilmark, Chatham, Orleans, Brewster, Wellfleet, Truro, Provincetown, Mashpee, Cotuit, Edgartown, Oak Bluffs, Barnstable, Sandwich, W. Barnstable, Yarmouth, Falmouth, and Bourne. Conversions planned in: C-O-MM FD, Tisbury, and West Tisbury
Metropolitan Area Planning Council (MAPC)	Present	Has Coordinated the conversion or Pending Conversion of 58,000 Street lights in 21 municipalities including: Arlington, Chelsea, Natick, Woburn, Somerville, Sharon, Winchester, Swampscott, Winthrop, Gloucester, Hamilton, Melrose, Wenham, Beverly, Northampton, Salem, Lowell, Chicopee, Westfield, Malden, Brockton
Cambridge	Present	Replacing all street, park, and decorative lights with LED Fixtures, plus wireless controls for street lights ⁹⁴
Fitchburg	March 2014	Considering Conversion ⁹⁵
Holyoke	December 2013	Completed Second Year of Three Phase Project to Convert all Street lights to LED ⁹⁶
Greenfield	May 2013	Invitation to Bid for Conversion of 416 Fixtures to LED ⁹⁷
Newton	May 2013	26 pilot lights converted with plan to convert all 8,400 ⁹⁸

City of Pittsburgh Projected Savings



kWh

- Projected savings nearly 14 million kWh per year

Maintenance

- Reduce yearly maintenance contract by 90%

Savings

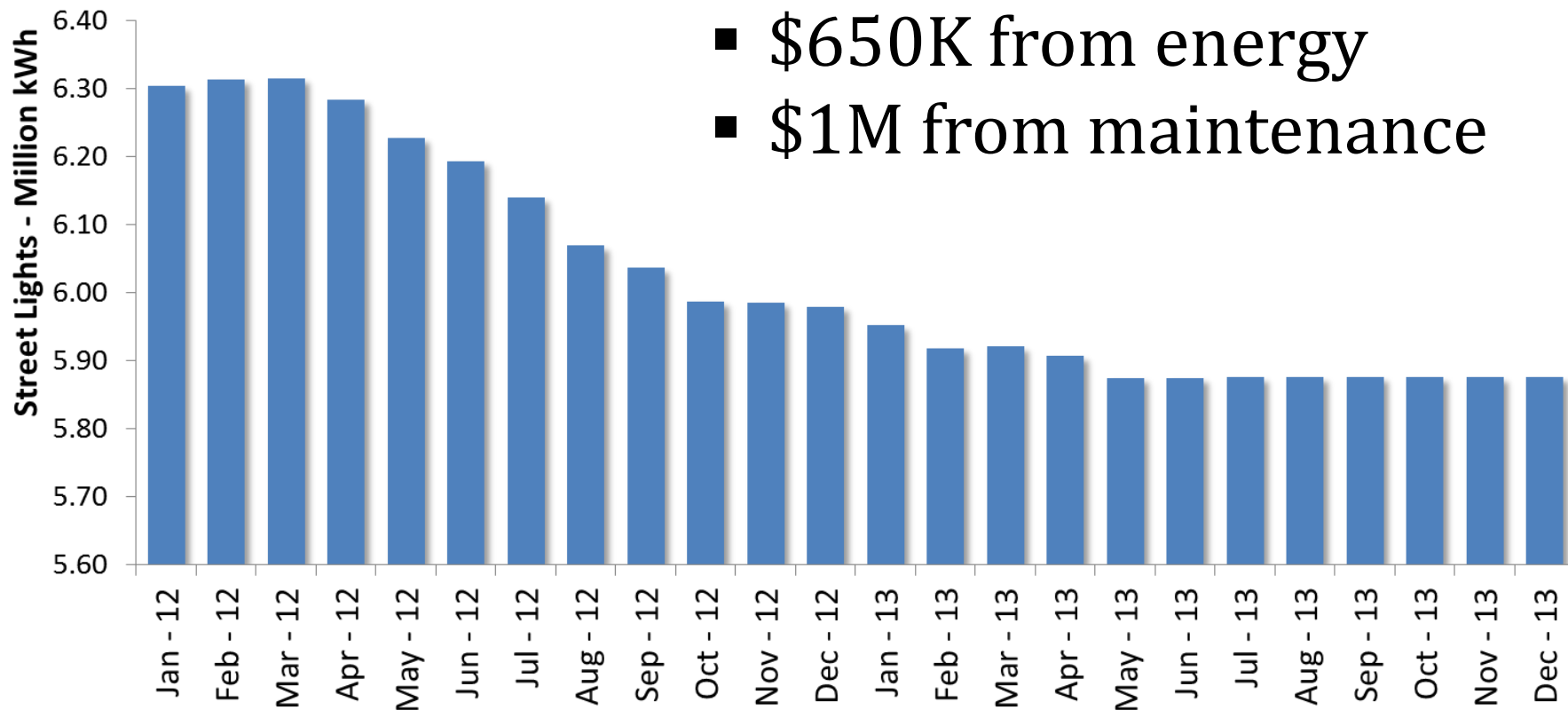
- kWh = \$1,000,000
- Maintenance = \$1,100,000



City of Baltimore Street Lights: Completed in 2013

Replaced **11,115** street lights with LEDs

- Annual savings:
 - \$650K from energy
 - \$1M from maintenance



Baltimore City Department of Public Works



WHERE ARE WE HEADED?



U.S. DEPARTMENT OF **ENERGY**

Energy Efficiency & Renewable Energy

42% of cities using EECBG funding installed street lights



NYC commits to full conversion by 2017

Rhode Island OER and Portland, M.E. already partners



Boston has already converted 2/3 of street lights

U.S. DEPARTMENT OF **ENERGY** | Energy Efficiency & Renewable Energy

[EERE Home](#) | [Programs & Offices](#) | [Consumer Information](#)



THE PRESIDENTIAL CHALLENGE FOR ADVANCED OUTDOOR LIGHTING

But what about smaller municipalities?

RESOURCES

EXISTING RESOURCES/STAKEHOLDER INITIATIVES



[US Department of Energy Better Buildings Challenge](#)

In exchange for technical assistance and strategic partnership with financial institutions (et.al.), partners agree to **reduce portfolio energy usage by 20% over the next 10 years.**

- [Outdoor Lighting Accelerator](#)

The US Department of Energy's Outdoor Lighting Accelerator program provides municipalities with the tools and guidance necessary to complete a goal of replacing all lights system-wide within two years.



[Efficiency Vermont Conversion Guide](#)

Step by step Guide for improving Efficiency in Municipal Street and Public Space Lighting

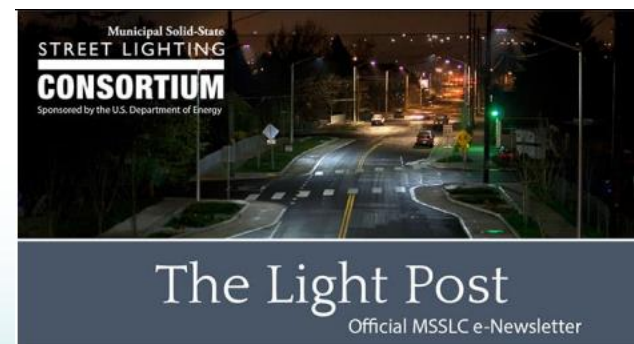


[Municipal Solid State Street Lighting Consortium \(MSSSLC\)](#)

Shares technical information and experiences related to LED street and area lighting demonstrations, standing as an objective resource for evaluating new products on the market intended for those applications.

MODEL TOOLS AND SPECIFICATIONS

- [Streetlight retrofit financial analysis tool](#) to help municipalities determine cost-savings of a potential conversion
- [Model Specification for LED Roadway Luminaires, V2.0](#)
- [Model Specification for Networked Outdoor Lighting Control Systems V2.0](#)





CONTACT:

Brian Buckley, BBuckley@NEEP.org
P. 1.781.860.9177 ext. 152

Northeast Energy Efficiency Partnerships (NEEP)
91 Hartwell Avenue Lexington, MA 02421
www.neep.org