

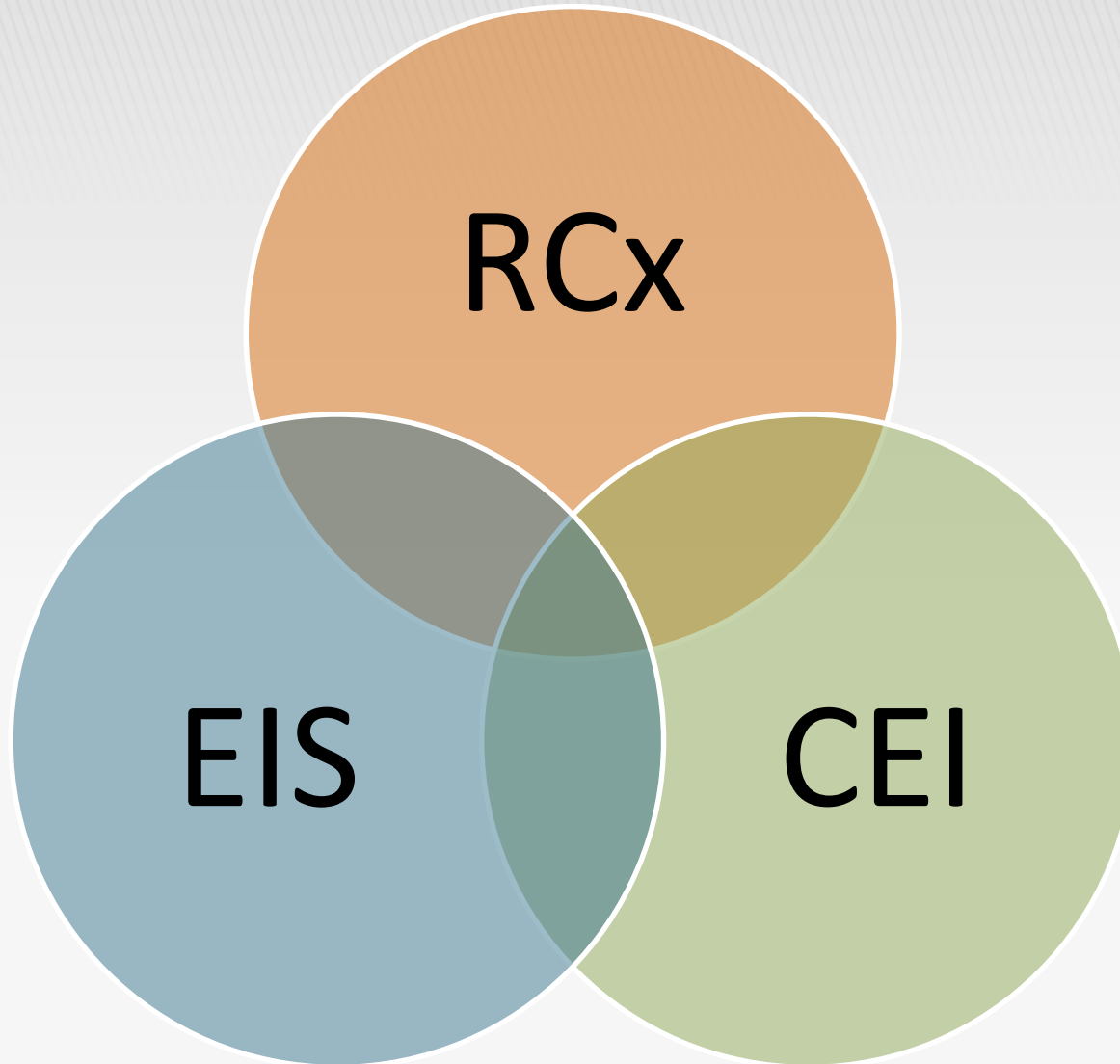
# A THREE-POINT APPROACH TO SUCCESSFUL STRATEGIC ENERGY MANAGEMENT

▶ Patrick Reedy

[www.EnergySENSEI.com](http://www.EnergySENSEI.com)

[www.CascadeEnergy.com](http://www.CascadeEnergy.com)

# 3 COMPONENTS OF SUCCESSFUL SEM



BPA, ETO - Refrigeration Operator Coaching  
EVT - Refrigeration Cohort

**RCx**

Xcel Energy - EIS

**EIS**

**SEM**

ETO - Core SEM  
BPA - HPEM

**CEI**

# RETRO-COMMISSIONING

## Energy Scan - Identify/Prioritize Opportunities

SENSEI™										
Dashboard   Explore   Manage <b>Act</b> Logout										
#	COMPLETION DATE	NAME	ENERGY IMPACT	PRIORITY	STATUS	ASSIGNED TO	COLUMNS			
1	2013-04-08	Raised Intermediate Pressure Set Point	Medium	Normal	Complete	Unassigned				
2	2013-07-11	Raised Freezer Suction Pressure Set Point	Medium	Normal	Complete	Unassigned				
3	2013-04-08	Reduce Discharge Pressure	Large	Normal	Complete	Unassigned				
4	2013-04-09	Tuned Evaporator Coils	Medium	Normal	Complete	Unassigned				
5	2013-04-11	Turned off Door Heat	Large	Normal	Complete	Unassigned				
6	2013-04-10	Adjusted Door Fans on Door	Small	Normal	Complete	Unassigned				
7	2013-05-05	Upgrade Control Software	Large	High	Complete	Unassigned				
8	2013-05-05	Turn Off Dock Door Lights	Medium	High	Complete	Unassigned				
9	2013-05-05	Turn off High Pressure Sodium Lights	Small	Low	Complete	Beth Glynn				
10	2013-09-18	Cycle Compressors using refrigeration control system	Large	High	Complete	John				
11	2013-11-17	Implement Wet Bulb Approach Control	Medium	Medium	Complete	Unassigned				
12	2013-05-24	Control System Operator Training	Small	High	Complete	Unassigned				
13	2013-06-22	Repair Leaking Hot Gas Valve to Morris Ice Machine	Large	High	Complete	Unassigned				
14	2013-10-01	Decrease Door Time Delay on Freezer Doors	Small	Low	Complete	Unassigned				

Demo6 - Arizona Facility ▲      Log out      Give Feedback

# CONTINUOUS ENERGY IMPROVEMENT



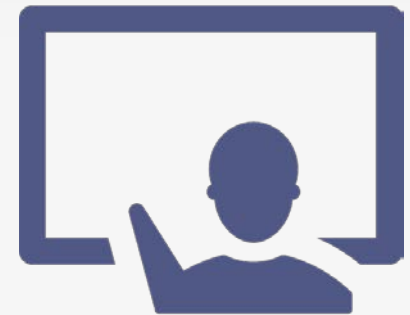
Energy Team



Energy  
Policy & Goal

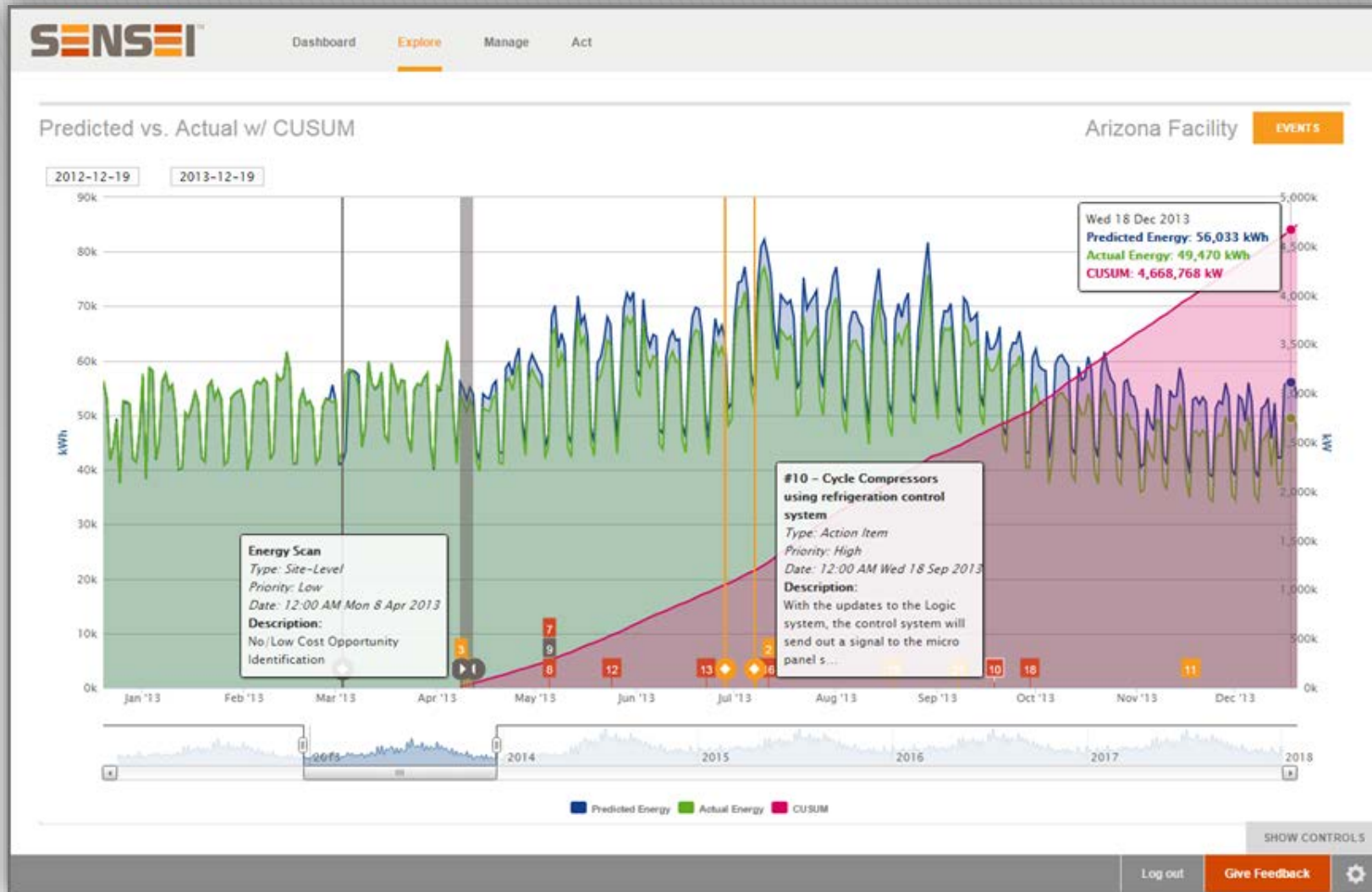


Resources

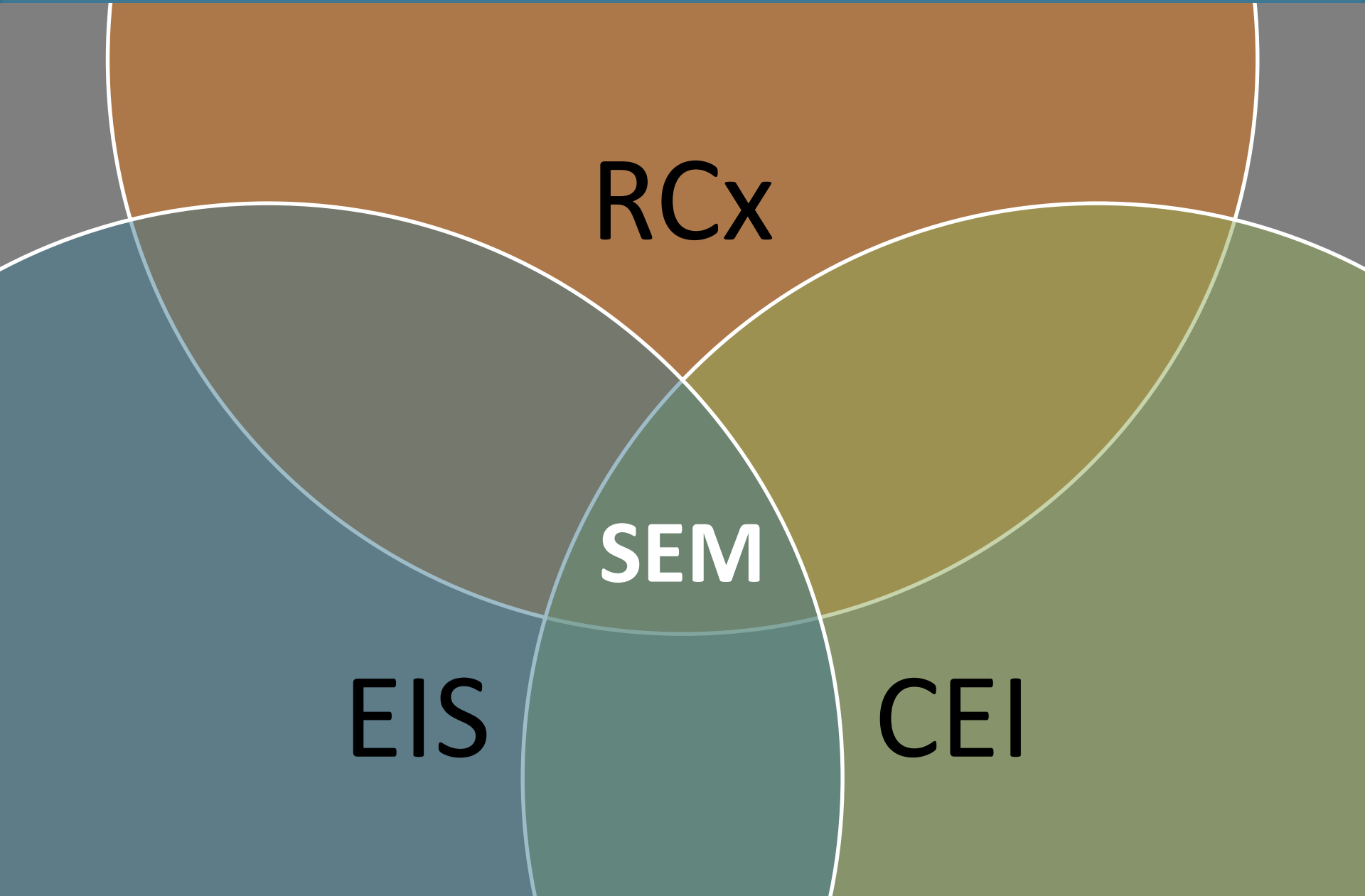


Employee  
Engagement

# ENERGY INFORMATION SYSTEM



# SUCCESSFUL SEM BLENDS



**RCx**

**SEM**

**EIS**

**CEI**