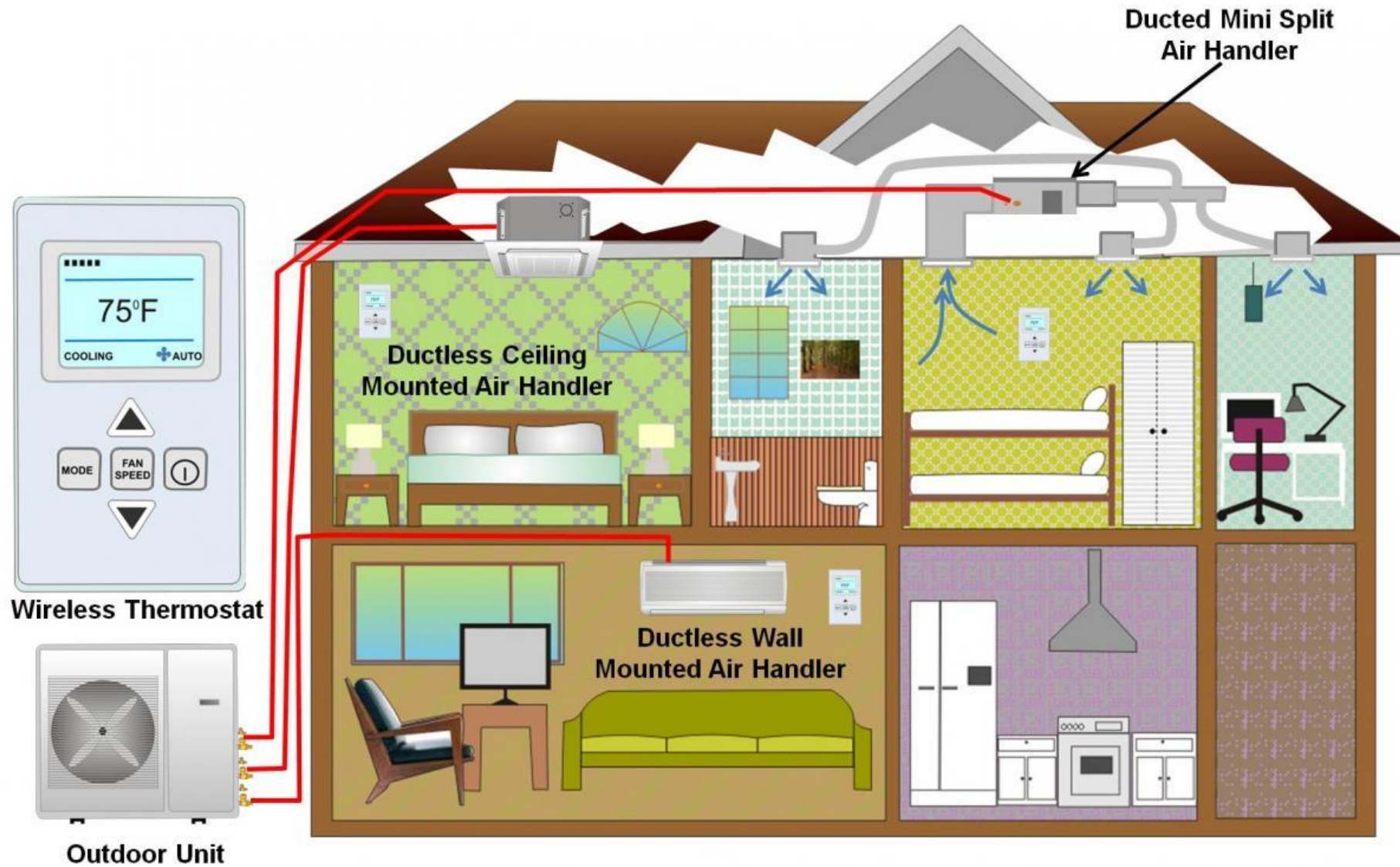


The Perfect Storm for New Home Construction

**The Convergence of MA Energy Code, Air Source Heat Pump Technology,
and Utility & Govt. Incentives**

Installation Options



Indoor Options



The Designer Series | A new style of heat pump has arrived

MITSUBISHI ELECTRIC

A collage of three images showing the indoor unit installed in different settings. The first image shows the unit in a kitchen, the second in a bathroom, and the third in a hallway. The unit is shown in a sleek, modern design that blends with the surrounding environment.

Flexible Air Flow Setting



✓ 5 air flow directions



✓ Auto vertical swing air flow direction



✓ 4 fan speeds and auto fan mode

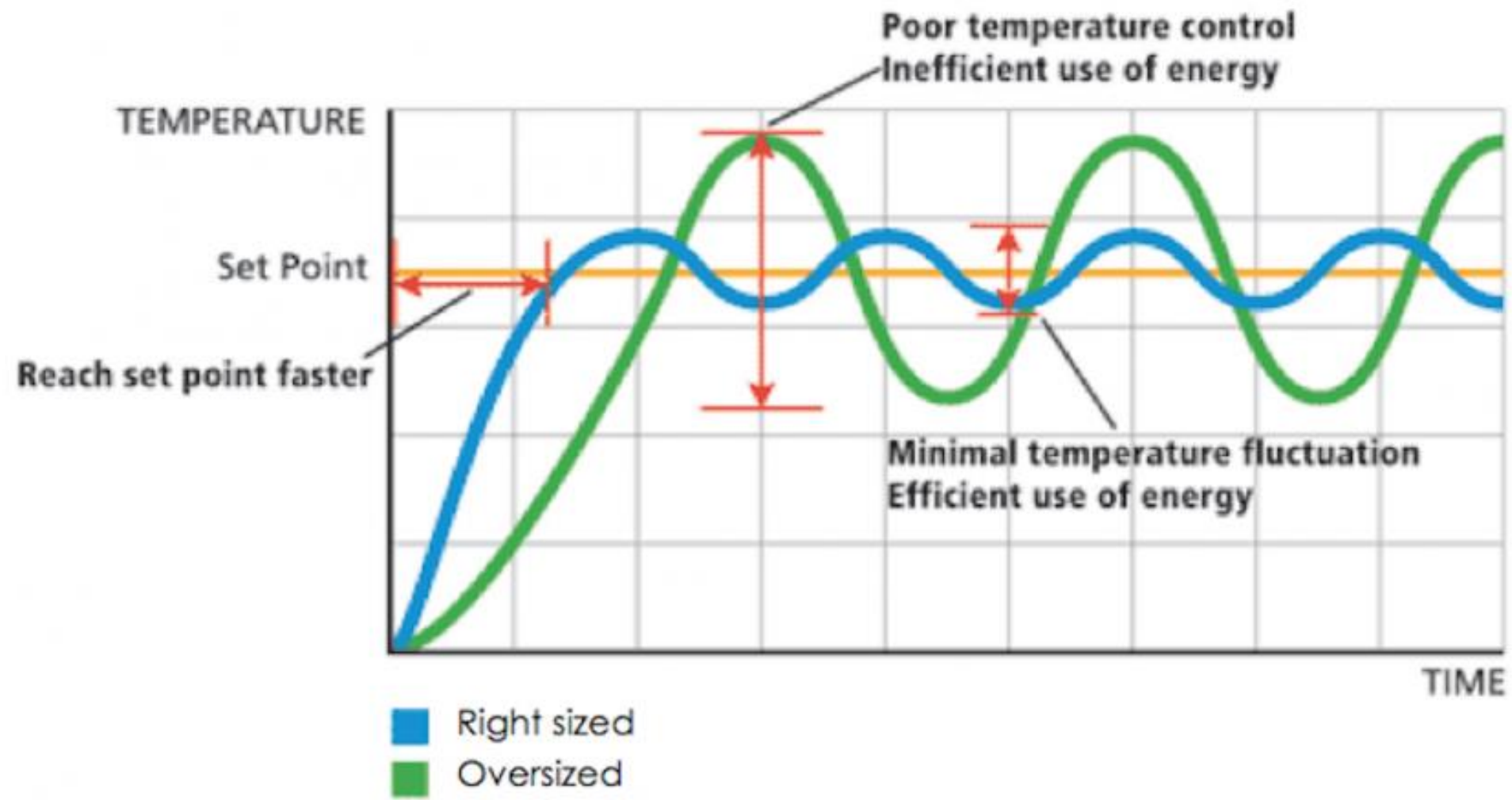
Ruskindale
Rd. Boston



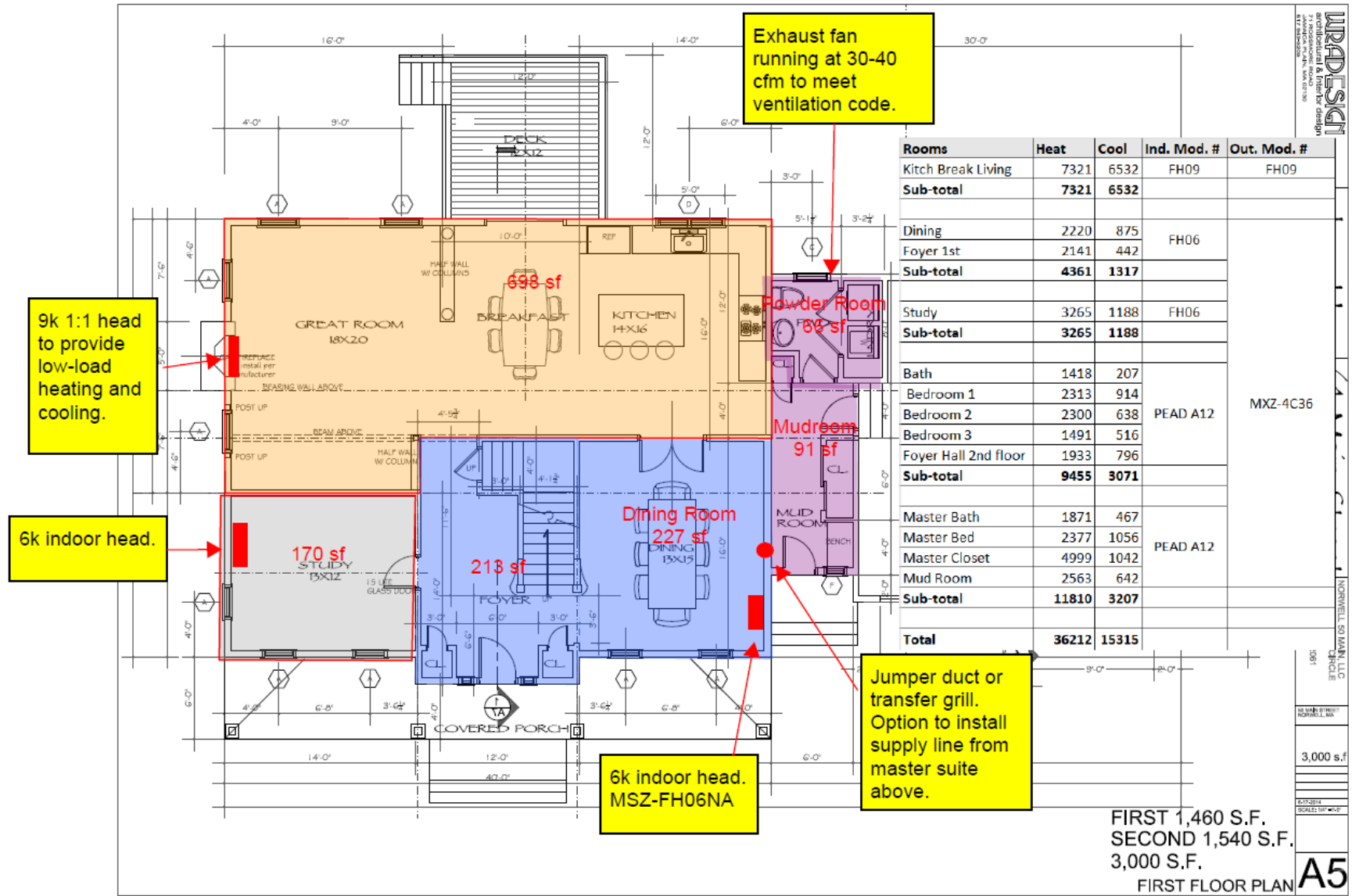
Compact Ducted System



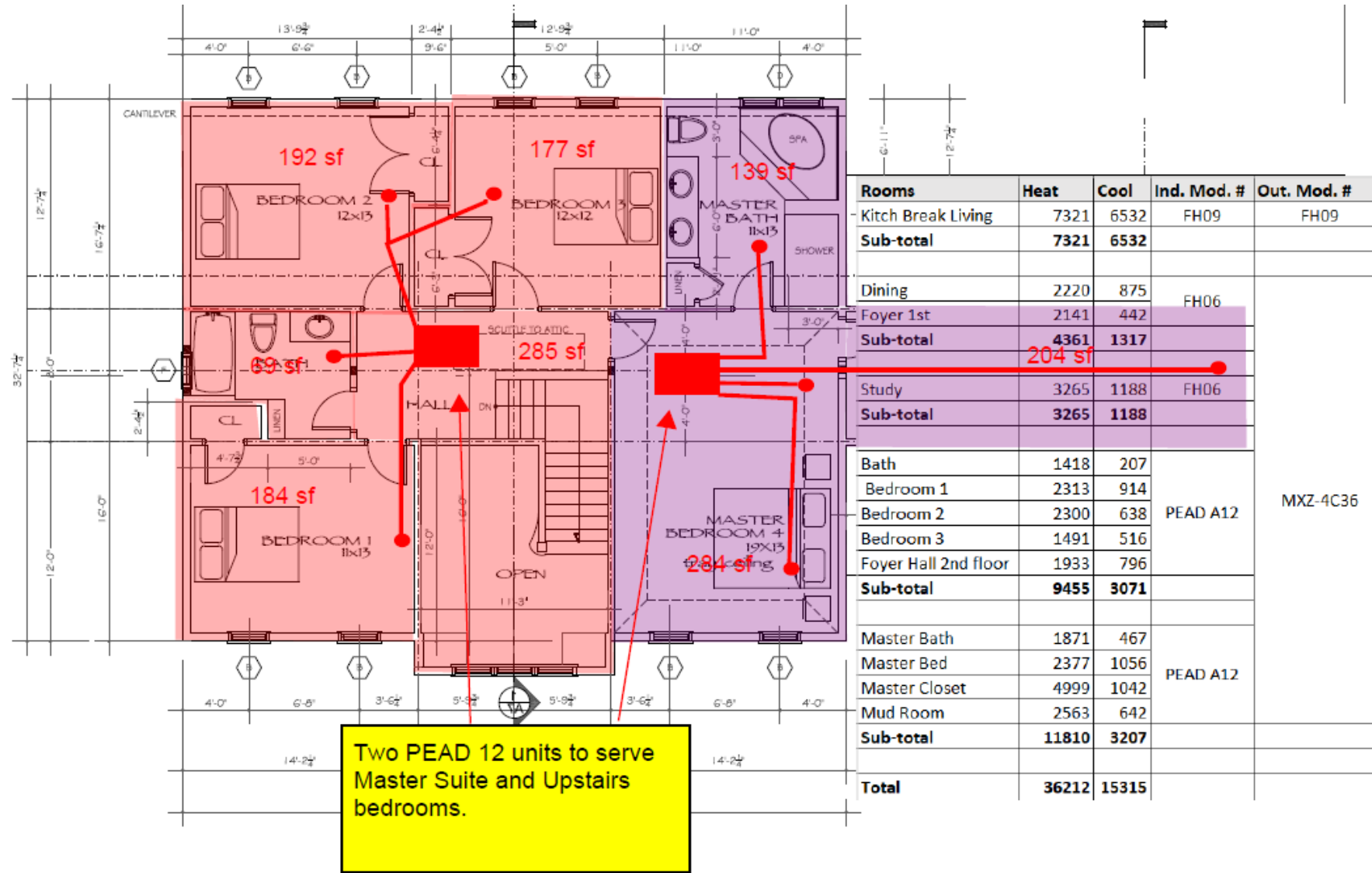
Matching Loads by Room



Colonial - First Floor



Colonial – Second Floor



Rooms	Heat	Cool	Ind. Mod. #	Out. Mod. #
Kitch Break Living	7321	6532	FH09	FH09
Sub-total	7321	6532		
Dining	2220	875	FH06	
Foyer 1st	2141	442	FH06	
Sub-total	4361	1317		
Study	3265	1188	FH06	
Sub-total	3265	1188		
Bath	1418	207		
Bedroom 1	2313	914		
Bedroom 2	2300	638	PEAD A12	
Bedroom 3	1491	516		
Foyer Hall 2nd floor	1933	796		
Sub-total	9455	3071		
Master Bath	1871	467		
Master Bed	2377	1056	PEAD A12	
Master Closet	4999	1042		
Mud Room	2563	642		
Sub-total	11810	3207		
Total	36212	15315		



Basement Wall
insulated w/
Indoor Unit & HP
Water Heater



Ventilation & Air Circulation

- **Heat Recovery Ventilation Systems**
- **Bathroom Exhaust Fans**
- **Wall Transfer Fans**
- **Ducted Fans**

Factors That Make it Work

- **Homes That are 3ACH50 or Less**
- **Mechanical Ventilation**
- **Technology Improvements**
- **Informed Home Buyers**