

City of Beverly Fleet Electrification

May 3, 2023

Erina Keefe
Sustainability Director
ekeefe@beverlyma.gov





1 Municipal Fleet

- National Grid Fleet Advisory Service Program
- School, Police, & other departmental fleet EVs



2 Charging Infrastructure

- Electric vehicle supply equipment (EVSE) for public & municipal fleet



3 Community Education & Resources

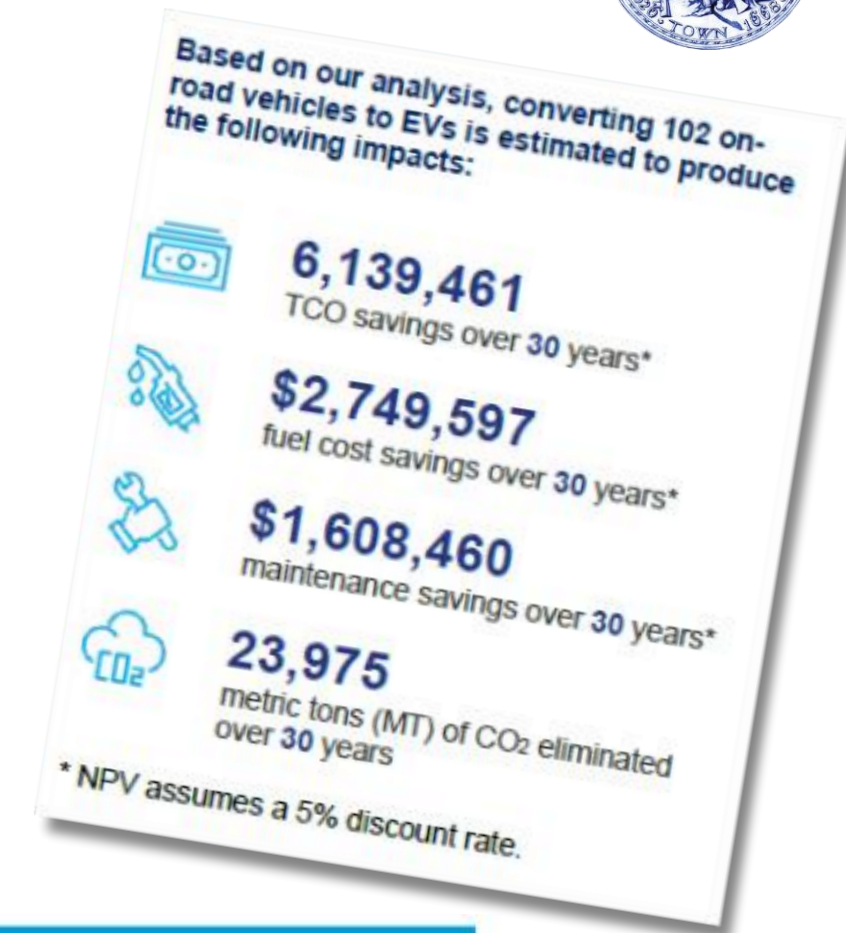
- National Drive Electric Week Events
- Green Beverly's Community Coach



Municipal Fleet Electrification Assessment

Through National Grid Fleet Advisory Services Program (September 2021)

- ✓ Free!
- ✓ Basic capacity analysis available from utility to check transformer/pole
- ✓ Supports grant applications
- ✗ Significant data gathering / assumptions
- ✗ EV equivalents not true equivalents, or unavailable





Municipal Fleet

Internal procurement policy: Try EVs/hybrids first

Schools



- 4 full-size ESB; 1 on the way
- 10-yr lease with Highland Fleets with (new) option to buy
- DCFCs at bus depot
- Vehicle-to-Grid technology
- Muni resources forthcoming



Police, Parking Enforcement, Health, Inspections



- 2 Teslas: "Not rugged enough"
- No pursuit-rated EVs available/acceptable
- BMW i3s
- Prius Cs
- Barriers: Vehicle cost; availability; on-site charging infrastructure





Charging Infrastructure

8 Public Level 2s

8 dual-port charging stations in public lots

4 DCFC

For public, in the pipeline

2 Fleet Level 2s

At police station

- MassEVIP for hardware & utility Make Ready Program for electrical infrastructure
- "Goldilocks" of charging equipment?
 - Ongoing & unfunded costs: Networking, maintenance, warranty
 - Ease of installation
 - Reliability & maintenance/troubleshooting
 - Controls & interface
- Barrier: Significant electrical service upgrades needed



Community Resources

- National Drive Electric Week events with EV dealers offering free test drives
- Green Beverly's EV Coach for free community member advising

